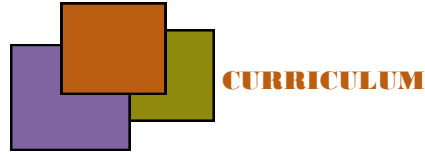


The MRSP is a residential program and participants are required to live in the housing provided. All rents include utilities (gas/ electric, and water), and apartments are furnished with the basics for living. Students are expected to provide their own linens. No pets are allowed.

**“The NIH MRSP was a once-in-a-lifetime opportunity to learn about how biomedical research can impact the health care we provide to our patients.”**

**Joseph Rimando  
Medical College of Georgia at  
Georgia Regents University**



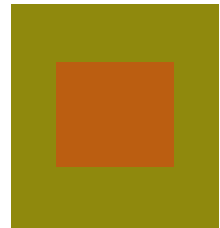
- Lectures on seminal basic, translational and clinical research topics that highlight the continuum of discovery, as well as include issues in bioethics, science policy and emerging technologies
- Training in clinical protocol development and the conduct of human subjects research
- Participation in clinical rounds focusing on the research patient population in the NIH Clinical Center
- Academic leadership training
- Assigned and dedicated yearlong advisor who provides career counseling and guidance
- Assigned and dedicated research mentor
- Access to NIH Clinical Center courses including the Introduction the Principles and Practice of Clinical Research and the Ethical and Regulatory Aspects of Clinical Research



National Institutes  
of Health

# NIH

## Medical Research Scholars Program



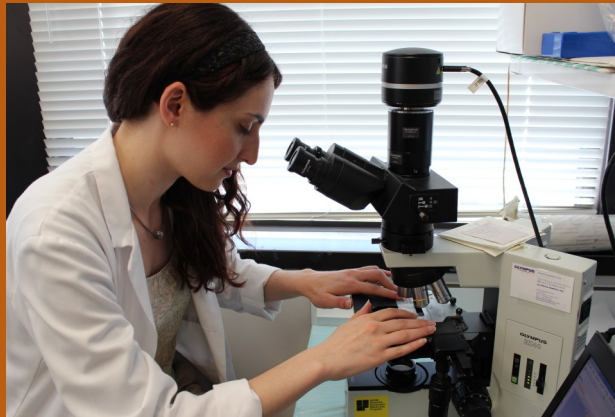
**"Medical discoveries of tomorrow depend on the students we train today."**

**Dr. Francis Collins, NIH Director**

<http://www.cc.nih.gov/training/mrsp>

## BACKGROUND

The National Institutes of Health (NIH) Medical Research Scholars Program (MRSP) is a comprehensive, yearlong research enrichment program designed to attract the most creative, research-oriented medical, dental, and veterinary students to the intramural campus of the NIH in Bethesda, MD.



“...living and sharing this journey with the other research scholars in my class is an experience I will treasure for the rest of my life.”

Taufiq Salahuddin  
Wake Forest University School of  
Medicine

## ELIGIBILITY

- **Target Audience:** Medical, dental, and veterinary students are eligible for this program.
- **Year in Program:** This program is designed for students who have completed their initial clinical rotations (i.e., typically third year). However, students with strong research interests are welcome to apply prior to having completed these rotations. Dental and veterinary students are encouraged to participate after either their second or fourth year. Accepted fourth-year students must defer graduation before participation.
- **MD/PhD:** Candidates in double degree programs (e.g., MD/PhD) are eligible to apply.
- **Eligibility:** Candidates must be U.S. citizens or permanent residents currently enrolled in one of the following accredited schools in the U.S. or its territories:
  - ◆ a medical school accredited by the **Liaison Committee on Medical Education**
  - ◆ a dental school accredited by the **Commission on Dental Accreditation**
  - ◆ an osteopathic school accredited by the **American Osteopathic Association**
  - ◆ a veterinary medical college accredited by the **American Veterinary U**

## APPLICATION INSTRUCTIONS

Application Cycle: October 1<sup>st</sup> – January 13<sup>th</sup>

Application consists of the following:

1. personal statement
2. curriculum vitae
3. research areas of interests
4. contact information for three references
5. undergraduate and graduate/ professional school transcripts

Applications must be submitted electronically by January 13<sup>th</sup>. All letters of recommendation must also be received electronically by January 13<sup>th</sup>.

“As a veterinarian in the program, MRSP was a unique and excellent opportunity to share ideas on how animal and human health can complement one another. It's a great year to apply classroom knowledge to find solutions to some of science's most vexing challenges.”

Lisa Gretebeck, VMD  
University of Pennsylvania School of  
Veterinary Medicine